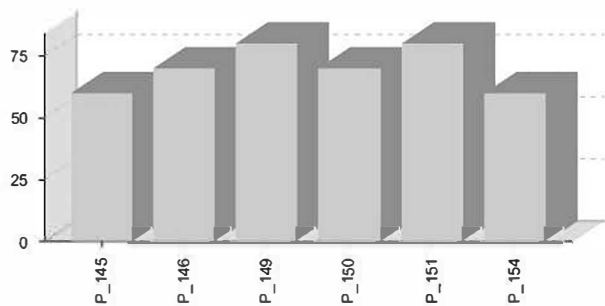


Anejo: Homogeneidad de los estratos

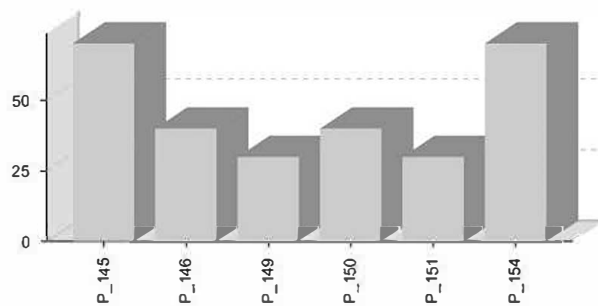
Estrato: 2
 Descripción: Pinares de *P. sylvestris* en zonas altas, Fcc >70%

Parcelas Totales: 6
 Parcelas Clásicas: 6
 Parcelas Periciales: 0

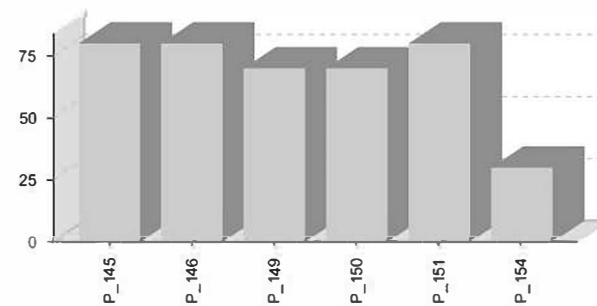
FCC Arbolado



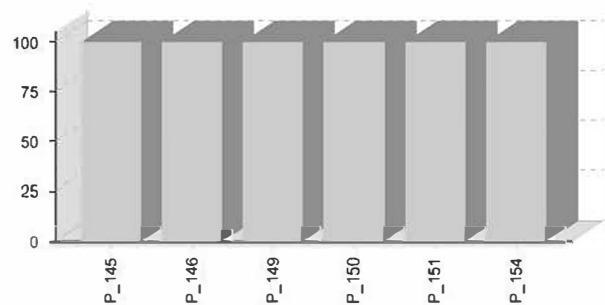
FCC Matorral



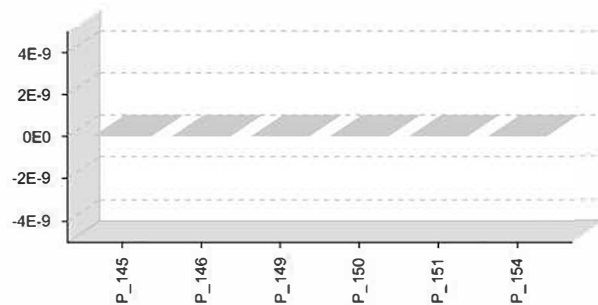
FCC Pasto



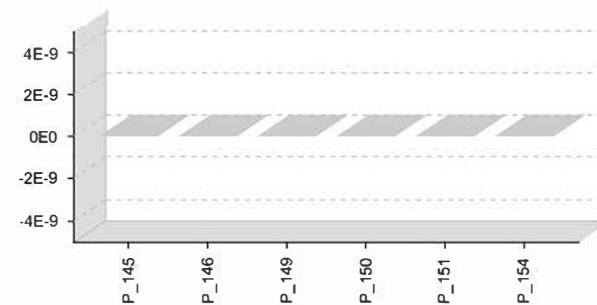
OC Pináceas



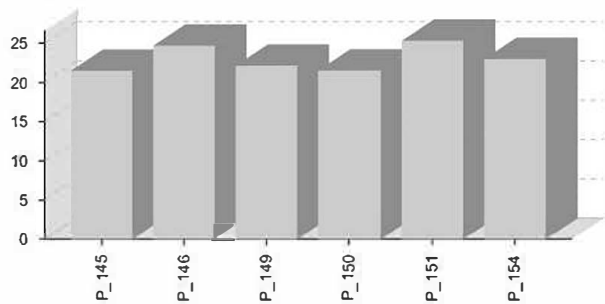
OC. Quercíneas



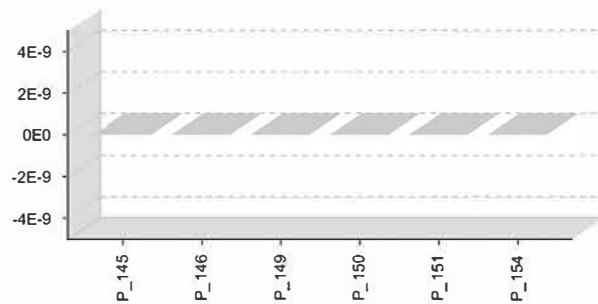
OC. Otros



DG Pináceas



DG Quercíneas



DG. Otros

